



Excavation | **K1SM**



US patent 7,578,726
US patent 7,717,710

High-performance ceramics for controlled, intuitive excavating.

Thanks to its exceptional properties, ceramic has proved its worth in a vast range of applications for many decades.

In true Komet® style, we were the first manufacturer to use this material for producing rotary instruments. The overwhelming success of the Komet CeraLine instruments prompted us to take advantage of this special, high-performance material composed of zirconium and aluminium dioxide ceramic, partly stabilized by yttrium, for excavating instruments as well.

The outstanding efficiency of the CeraBur® K1SM was shown in a study compiled by the University of Münster, Germany.*

A study conducted by the Queen Mary University of London showed that the service life of the K1SM is three times as long as that of a round tungsten carbide bur.**

The CeraBur K1SM facilitates controlled, intuitive excavation, thereby enabling the user to feel when the instrument leaves the carious, soft dentin.

* Private lecturer Dr. Till Dammaschke, Dr. Aleksandra Vesnić, Prof. Dr. Edgar Schäfer, Westfälische Wilhelms-Universität, Poliklinik für Zahnerhaltung, Münster; *In vitro* should be italicized comparison of ceramic burs and conventional tungsten carbide burs in dentin caries excavation; Quintessence International, Volume 39, Issue 6 (June 2008), Pages 495 - 499

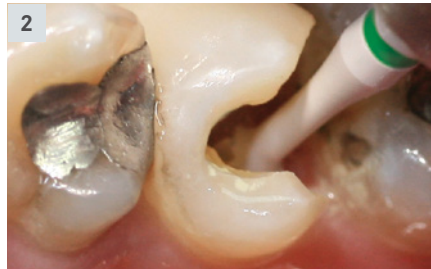
**Hr. Nawar Al-Zebari, Queen Mary University of London; Cutting efficiency and longevity of novel ceramic and conventional dental burs; 07/2013

Indications:

1. Controlled, intuitive excavation with the K1SM.RA.014.
2. The long shank permits easy access to deep cavities (K1SM.RASL.023).

Contra-indications:

Any treatment that requires an instrument to be used as a lever.



Recommendations for use:

- Use at a speed of \varnothing_{opt} 1.500 rpm with spray coolant.
- Maximum speed \varnothing_{opt} 40,000 rpm
- Use nylon brushes only to clean the instruments. Metal brushes may leave black friction marks on the instruments.

Shank RA:



Shank RASL:



Kit 4547.RA
 Contains two instruments per size
 010, 014, 018 and 023

