



EndoPilot

Endo motor and
apex locator all-in-one



A Complete Solution for Endodontic Procedures

The EndoPilot combines a customizable endo motor and a real-time apex locator which ensures full control of the file position.



Komet®, CeraBur®, CeraDrill®, CeraFusion®, C-Post®, DentinPost®, F360®, F6 SkyTaper®, FS®, FSD®, H4MC®, K-Stones®, PathGilder®, Pin-Diamonds®, PrepMarker®, O-Finishers®, S-Diamonds® and UM-Cutters® are registered trademarks of Gebr. Brasseler GmbH & Co. KG.

All products, images and designations mentioned in the text are the property of Komet USA or its parent and may be subject to patent, trademark or copyright protection. The absence of a special reference or the symbol © does not mean that there is no protection. All rights of distribution, also by photocopy, reprint (also in the form of extracts) or storing and recovery in any kind of data processing device are reserved and require our written approval.

EndoPilot

Innovation in endodontics

This torque and speed controlled endodontic motor ensures efficient preparation of the root canal while the modern, integrated apex locator determines the exact, real-time file position during treatment.

The EndoPilot contains a preprogrammed file library containing the parameters (i.e. speed, torque etc.) of the F360, F6 SkyTaper, Endo ReStart files and other commonly used file systems. The operator also has the option to develop individually adapted sequences and save them based on their own preferences.

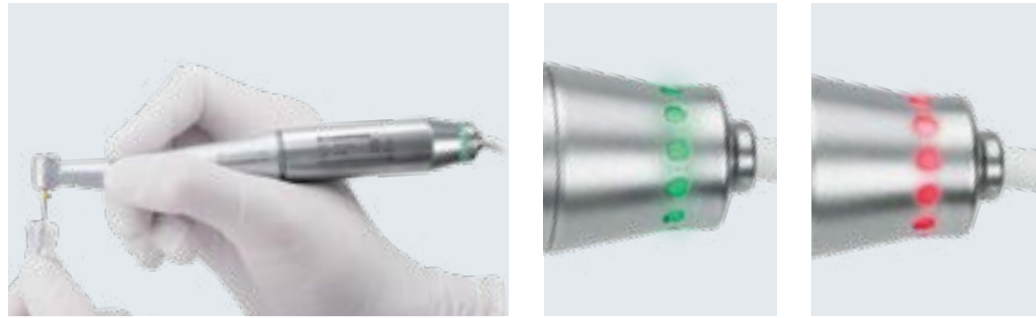
With a large, easy-to-read 7-inch touchscreen, the operator can easily navigate the user-friendly menu options.

Due to its small footprint, the wireless rheostat and cordless operation, the EndoPilot is ideal for small workspaces.

Features

- Endo motor and apex locator all-in-one
- Precise file position shown in real-time via a patented pulse measurement procedure
- Customizable preparation length at the apex locator
- Reduced torque in vicinity of the apex to prevent chip compaction



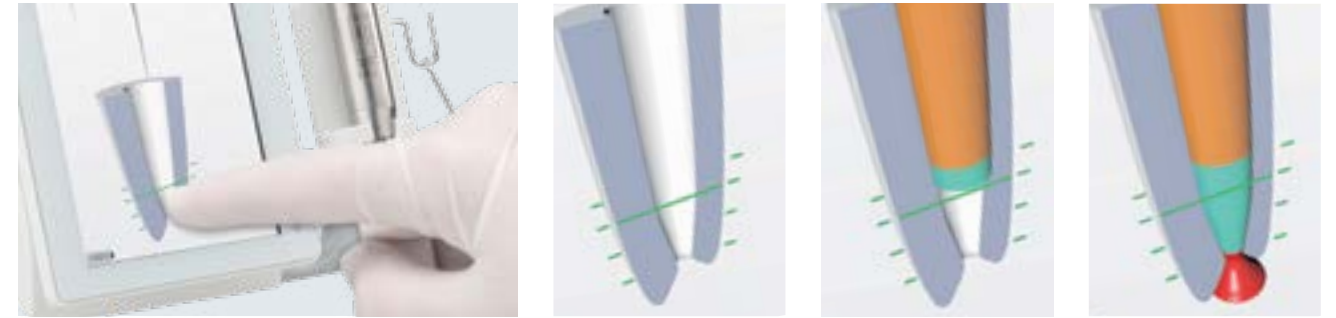


The best endodontic motor

A powerful, torque and speed controlled endodontic motor that features state-of-the-art technology for patient safety.

Advantages:

- When preset torque is exceeded, an alternating left and right movement prevents file jamming
- When apex is reached, the motor stops briefly, and slowly resumes clockwise rotation to ensure continuous evacuation of chips from root canal
- Features colored LED lights to indicate the direction of rotation and torque resistance



An innovative apex locator

The apex locator determines the exact, real-time file location during an endodontic procedure. This is done by transmitting a signal from a contra-angle handpiece and displaying the location of the file relative to the apex.

Advantages:

- Fully insulated handpiece eliminates electrical apex location errors
- Touch display allows operator to easily set the depth of preparation relative to the apex
- Can be used to determine the working length with manual files in combination with a file clamp



Integrated file library

The pre-loaded file system settings are easily accessible and customizable.

Features:

- Contains a pre-loaded file library with the parameters (i.e. speed, torque etc.) of Komet's F360, Procodile and F6 SkyTaper files, as well as nearly all other commonly used file systems
- Individual adapted sequences through the "MyFile" function
- File library is easily updated by micro SD firmware uploads
- "Favorites" option which allows quick access to your five favorite file systems



EndoPilot advantages at a glance:

- Endo motor and apex locator all-in-one
- Motor function that stops once the preparation length has been reached
- Battery lifetime of approximately 15 hours
- Customizable file sequences
- File library with 50+ preset file systems
- Wireless rheostat
- Fully insulated motor and contra-angle
- 7-inch touchscreen display
- Updatable firmware



The **ReFlex**[®] motion

An intelligent movement

Exclusively available with the Procodile file on the EndoPilot

The ReFlex motion is a patented, counter clockwise movement and is exclusively available with the Procodile file system on the EndoPilot.

The ReFlex motion starts with an efficient left-cutting rotary motion and then transitions to a reciprocating motion when the EndoPilot senses resistance, decreasing torsional stress on the file.

The ReFlex motion can be operated in two different modes - the ReFlex smart and ReFlex dynamic.

The ReFlex smart mode continuously measures the torque resistance on the file and adapts to minimize the risk of file separation. The ReFlex dynamic mode operates at a higher rotation until torque resistance is detected and then switches to a reciprocating motion.

Advantages of the ReFlex motion:

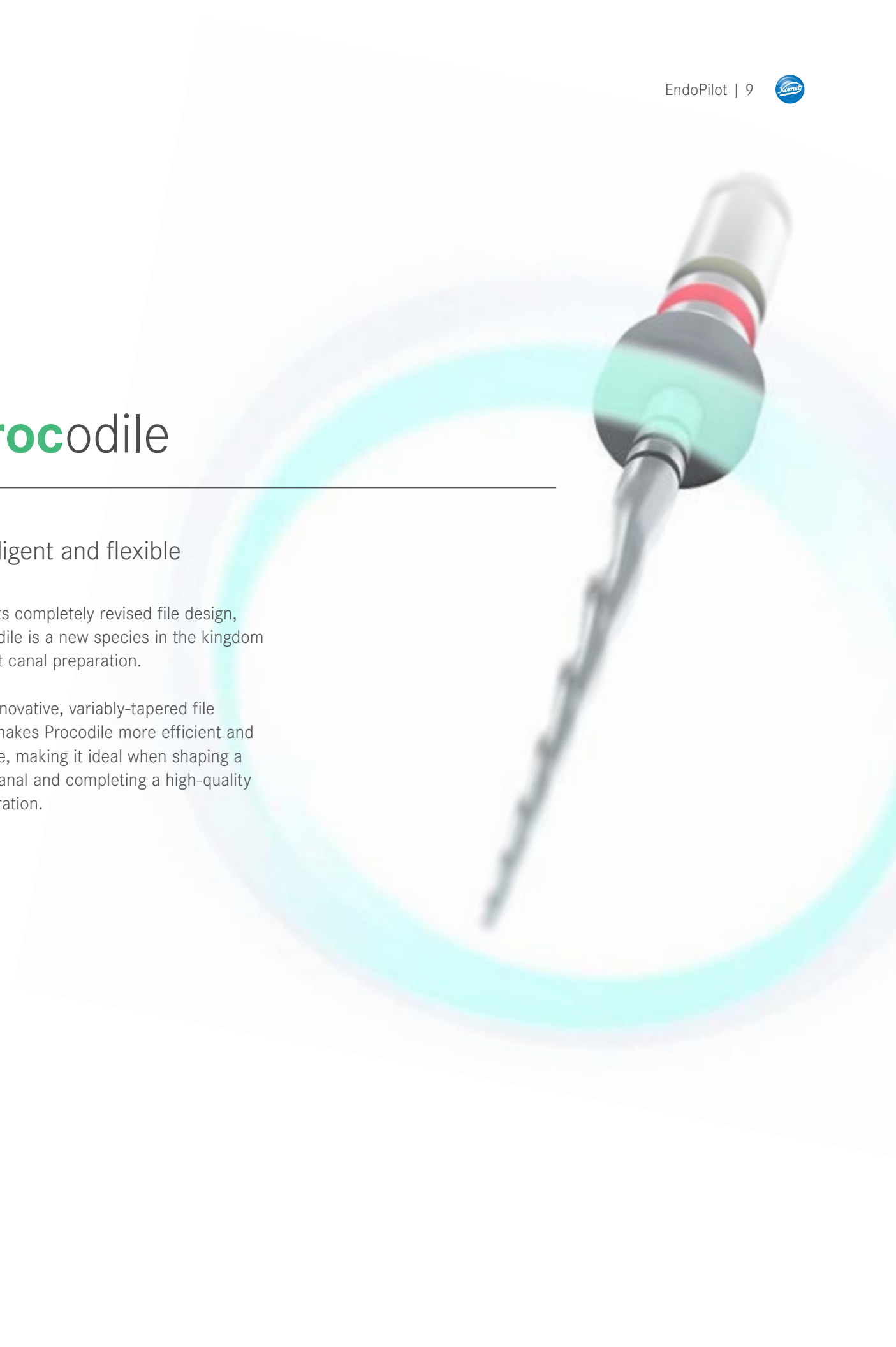
- Allows the EndoPilot to identify the part of the file that has the most load (i.e. coronal, center or apical third) and adjusts to the specific situation
- Provides optimal removal of debris in the canal by only moving counterclockwise when the file is not subject to resistance
- Minimizes the risk of separation by continuously measuring the torsional stress
- Provides extra security and increased efficiency during the preparation of the root canal

Procodile

Intelligent and flexible

With its completely revised file design, Procodile is a new species in the kingdom of root canal preparation.

The innovative, variably-tapered file core makes Procodile more efficient and flexible, making it ideal when shaping a root canal and completing a high-quality preparation.



Motion one ReFlex **dynamic**



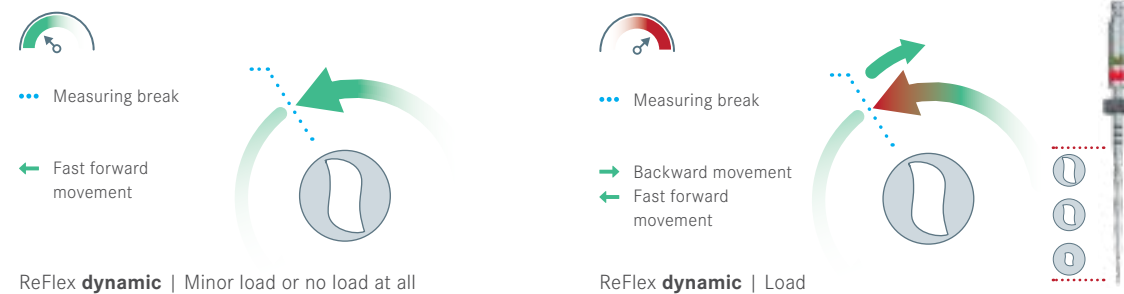
Efficient and safe

The ReFlex dynamic mode enables an efficient and safe preparation of the root canal.

This mode can adjust from a left cutting rotary to a reciprocating motion based on the resistance detected during the endodontic procedure.

Advantages:

- Optimal debris removal combined with maximum file safety
- High efficiency



Motion two ReFlex **smart**

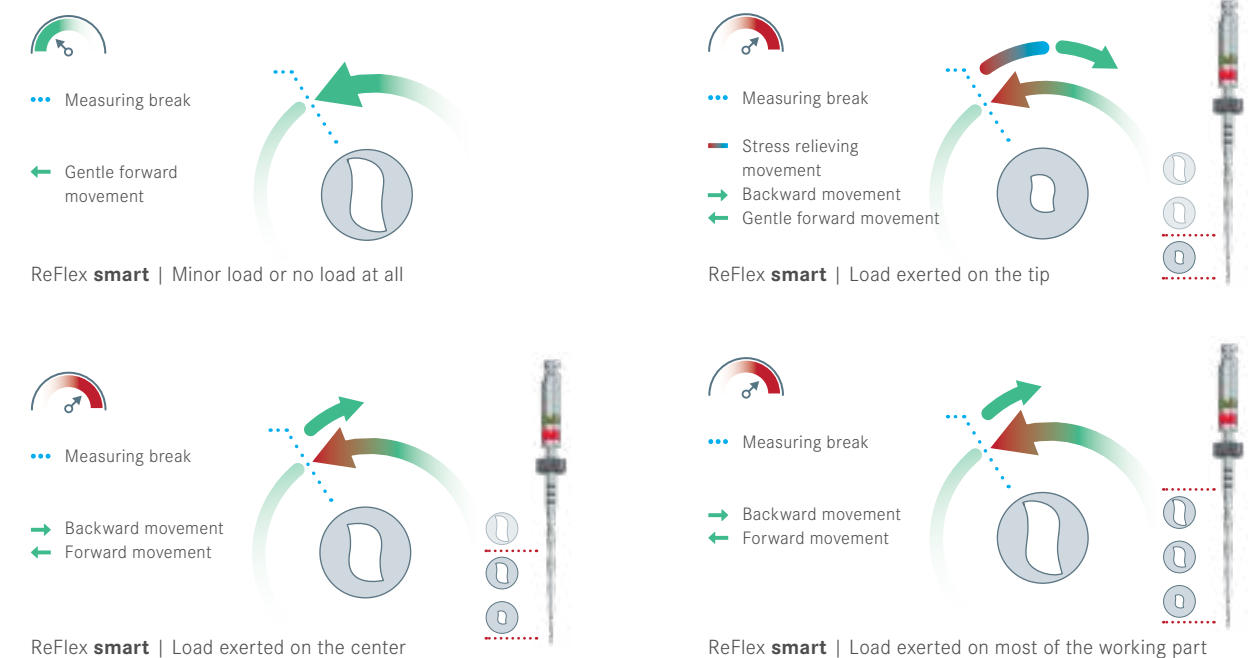


Adaptive and innovative

The ReFlex smart mode continuously monitors the stress level of each section of the file and adapts the reciprocating motion to minimize the stress.

Advantages:

- Designed to minimize the risk of file separation
- Intelligent movement that adapts the reciprocating motion to the file stress level
- Ideal for complex canal anatomies due to reduced stress on the file



Accessories

Fully insulated contra-angle.
The fully insulated contra-angle was specifically engineered for endodontic use and sends a discreet signal to the apex locator for the highest degree of accuracy.



Apex cable.
An easy-to-use cable that allows both real-time apex location through the handpiece and also allows the use of a manual file clip.



Wireless rheostat
The EndoPilot comes with an innovative, Bluetooth rheostat that is unlike anything else on the market.



Technical data

Type	EndoPilot
Power supply ¹	Input: 100–240 V/AC (50–60 Hz) Output: 12 V/1,25 A/DC or 12 V/1,5 A/DC The power supply unit complies with IEC 60601 for medical devices. (Only use the original power supply unit provided with the EndoPilot). Recharge device regularly, at least every 6 months.
Battery	Li-Ion Akku, 7.2 V, Power: 48 Wh
Electric protection class	II
Output	max. 3 V/5 A or 12 V/1.25 A (direct current)
Use	The device is designed for short-term use only Motor: 30 seconds full-load operation/1 minute idle
Speed	200–1.000 min ⁻¹ +/- 10 %
Torque	0,2–5 Ncm +/- 10 %
Device class	Class according to EN 60601: Application part type BF Do not use device in areas exposed to explosion hazards. Keep device away from flammable substances.
IP class	IP31 EndoPilot and rheostat IP40 Power supply unit
MPG/EU class	Ila
Environmental conditions	Air pressure 800 hPa to 1060 hPa
During operation:	+59 °F to +104 °F/air humidity: 20–80 %, non-condensing
During transport:	–59 °F to +140 °F/air humidity: 20–80 %, non-condensing
Weight	1450 g EndoPilot Controller
Dimensions	19 cm x 20,5 cm x 17,5 cm
Charging time of the battery	Approx. 9 hours
Battery life in continuous operation	Approx. 15 hours
Batteries for the rheostat	2 x 1.5 V AAA batteries

Subject to technical modifications.
¹ Do not use other power supply units. The power supply unit is essential for the safe use of the device.

Komet USA LLC
3042 Southcross Blvd, Suite 101
Rock Hill, SC 29730

Phone 888-566-3887

Fax 800-223-7485

info@kometusa.com

www.kometusa.com
